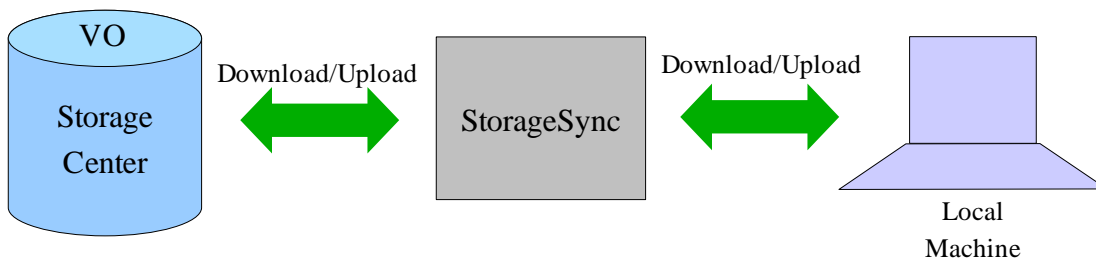


StorageSync

StorageSync is a tool to help user backup (download/upload) files from local machine to server, server to local machine or Synchronize both way. This is a tool which work with AfterOffice Virtual Office Storage Center. StorageSync is use for ensure the files which located on the local machine/server both are up to date. Below is the graph shows how StorageSync work with AfterOffice Virtual Office Storage Center.



You may download StorageSync at: <http://afteroffice.com/guide/storageSyncDownloads.htm>

Below is the screen of StorageSync (figure 1):

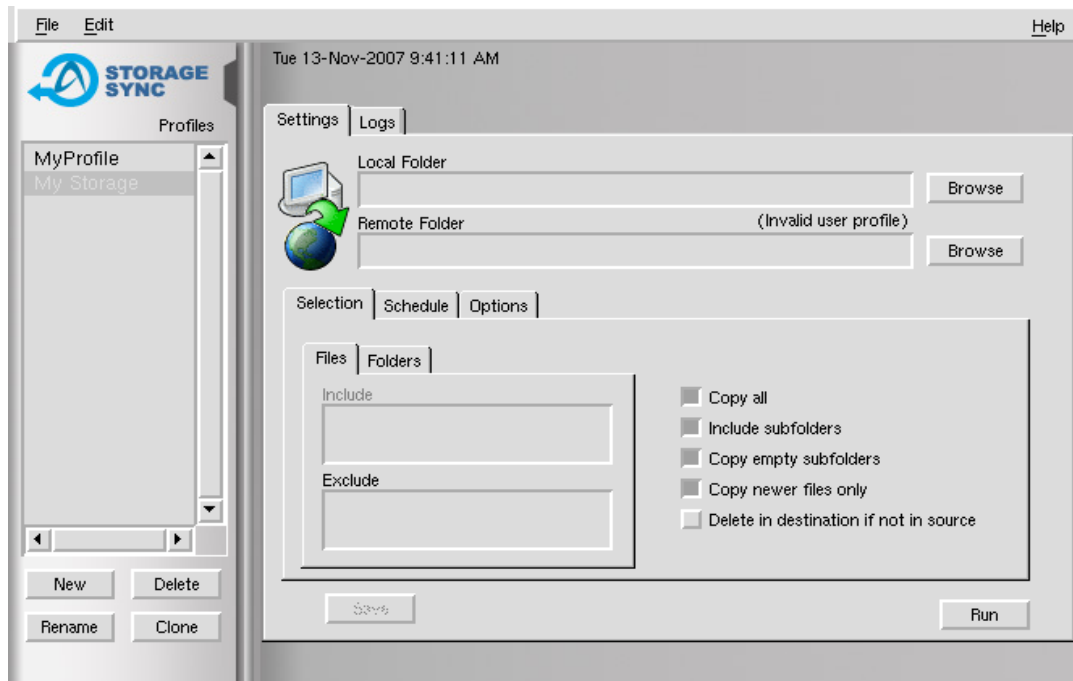


Figure 1

Disclaimer: All screen shots are use for training purposes, it might be not exactly the same as yours.

Create a Profile

Bring up the StorageSync and you will be able to find a screen like below appear on your monitor screen. Click on the **New** button for add a new profile to StorageSync.

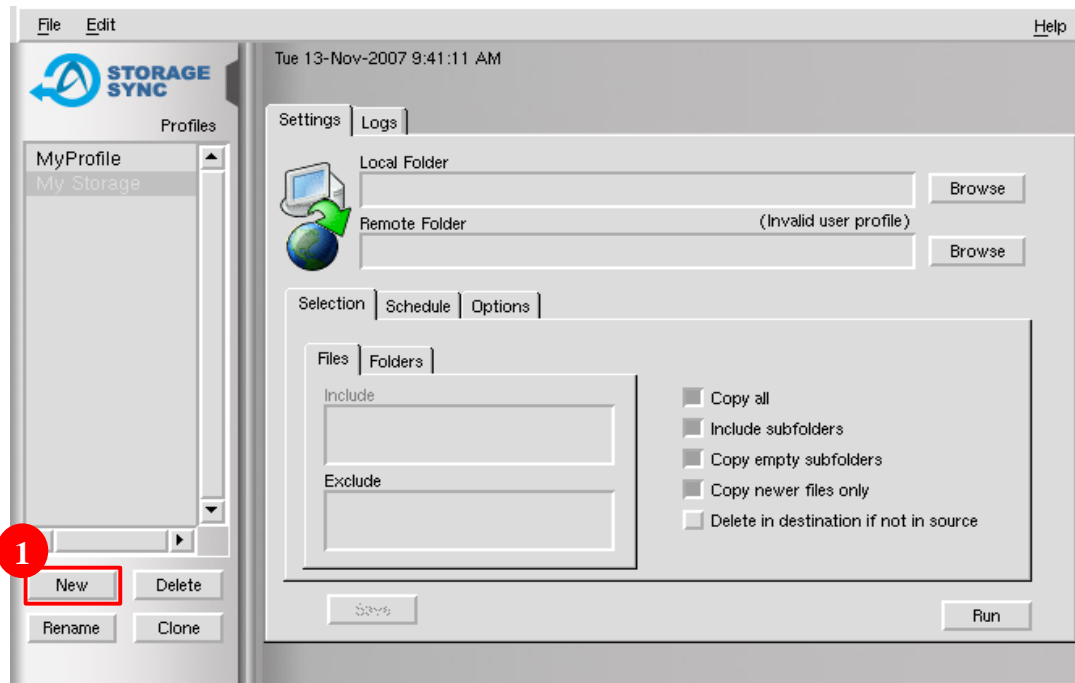


Figure 2

- New** Create new profile on StorageSync
- Delete** Delete selected profile
- Rename** Rename selected profile
- Clone** Duplicate a selected profile as a new one

Tips

Why profile is needed? With a preset profile, you may eliminate the time on configuring the setting while log on to the server. Follow the sequence below, you will be able to manipulate StorageSync.





Figure 3

Enter a profile name, click **Ok** to proceed.

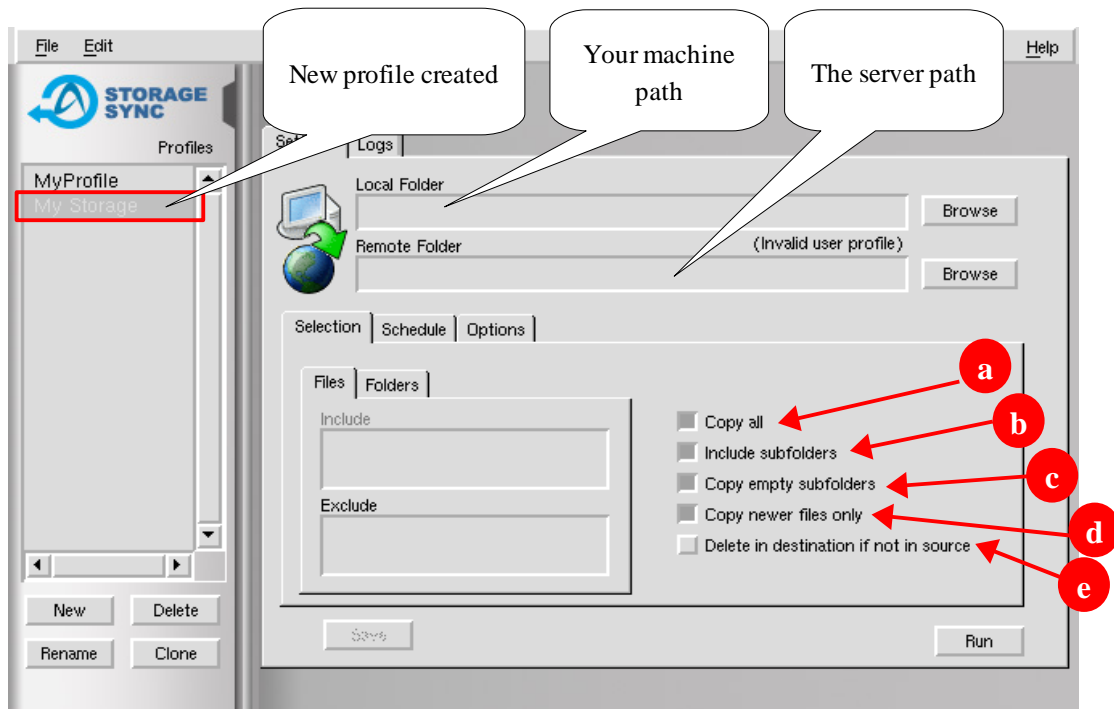





Figure 4

- a) Copy All if this option selected, all of the files under selected source will be copy to the destination
- b) Include subfolders This option allow you copy the subfolder(s) under the source to the destination
- c) Copy empty subfolders This option allow copy empty subfolder(s) from source to destination
- d) Copy newer files only Copy only new updated file from source to destination by comparing the modify date. The file(s) without update will remain
- e) Delete in destination if not in source If the file(s) in source could not be found in destination, these file(s) will be deleted automatically after the wizard

Backup Modes

There are 3 modes for backup your files, which are:

-  a) From server to Local machine File(s) will be downloaded from server to local machine
-  b) From local machine to server File(s) will be uploaded from local machine to server
-  c) Synchronize server and Local Machine File(s) will be compare between the source and destination, and upload the updated file (automatically) to the destination

How to StorageSync? (Local Machine to Server Backup method)

Run StorageSync, select your profile and click the **Browse** button under Local folder (figure 5). Let's use local machine to server backup method as the example for this manual.

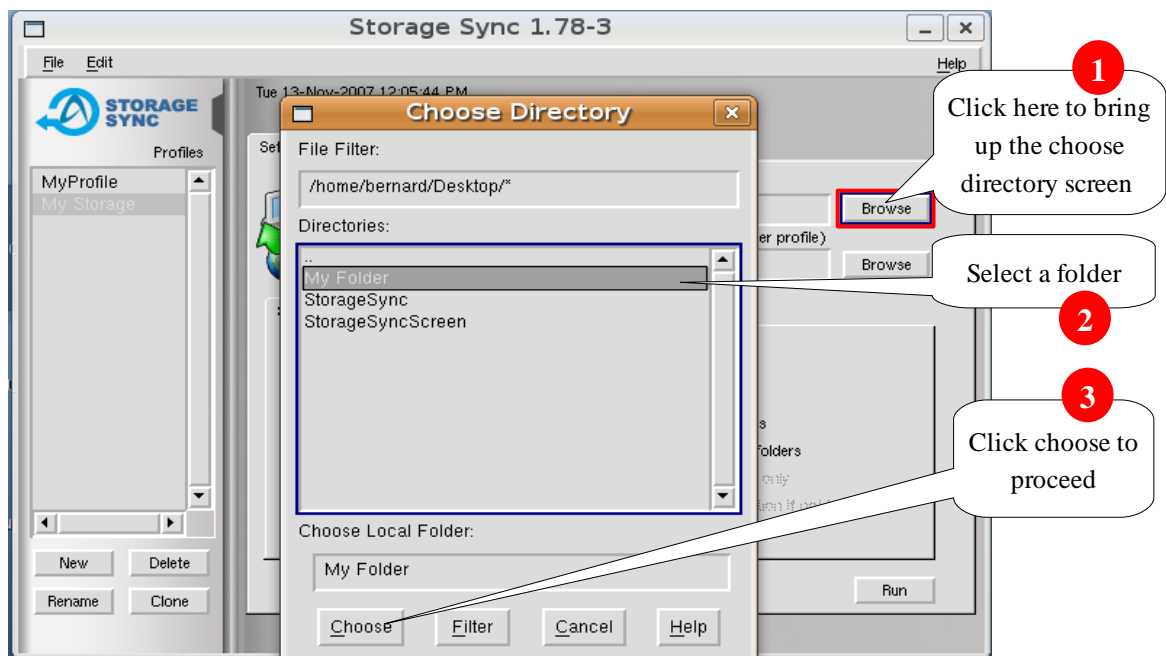
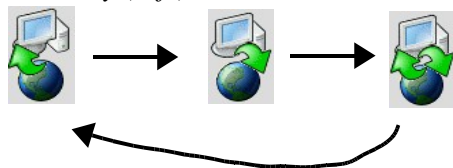


Figure 5

Tips

You may (left) click on the icon directly to switch the backup mode



Once the local folder selected, the you will be able to see a similar screen as below (figure 6):

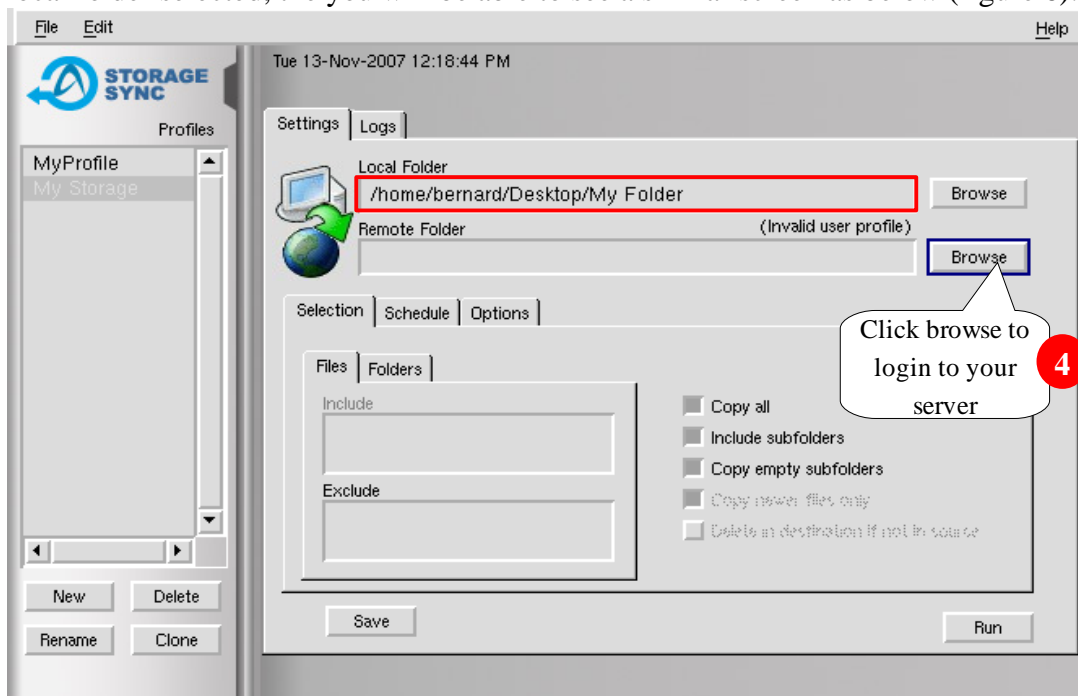


Figure 6

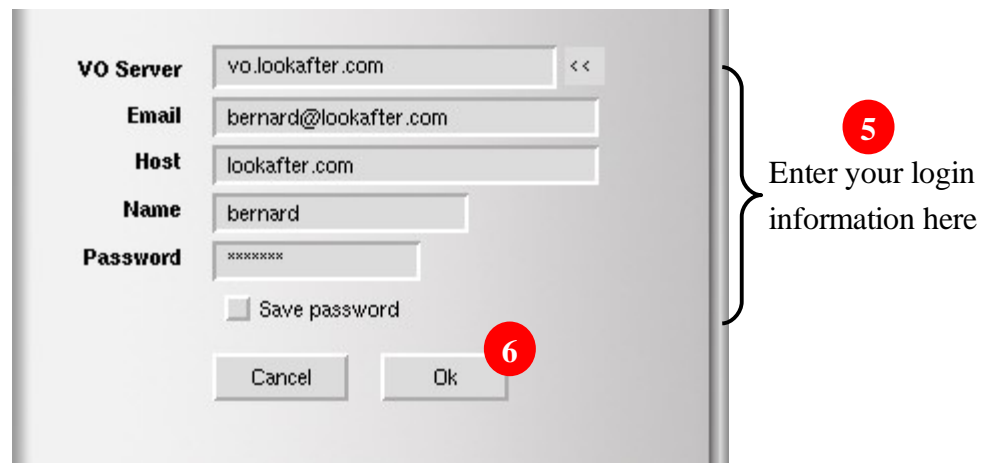


Figure 7

After you click the **Browse** button, you will be prompted to enter your login information (as figure 7). Once complete fill in the login information, click **Ok** button to proceed to next step.

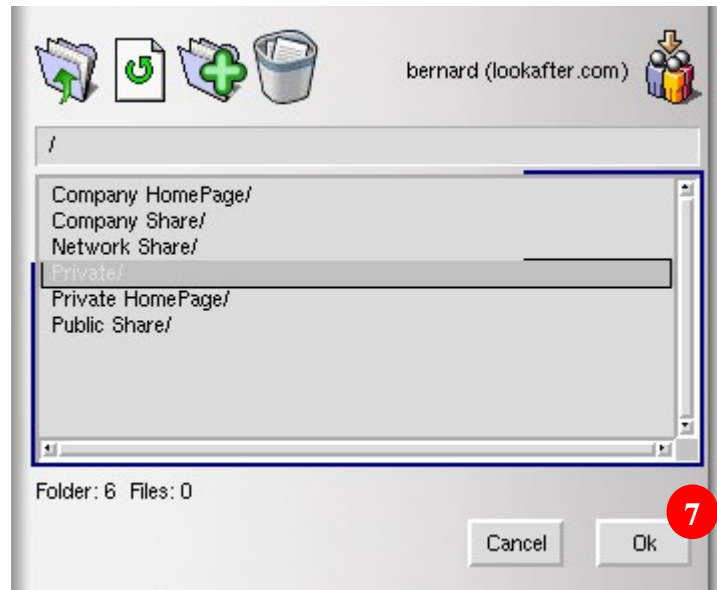


Figure 8

Once you success login to your Storage Center, a list of folders (figure 8) will be show. Select a folder as your destination, or navigate to any subfolders of the list above as your destination. Click **Ok** to proceed.

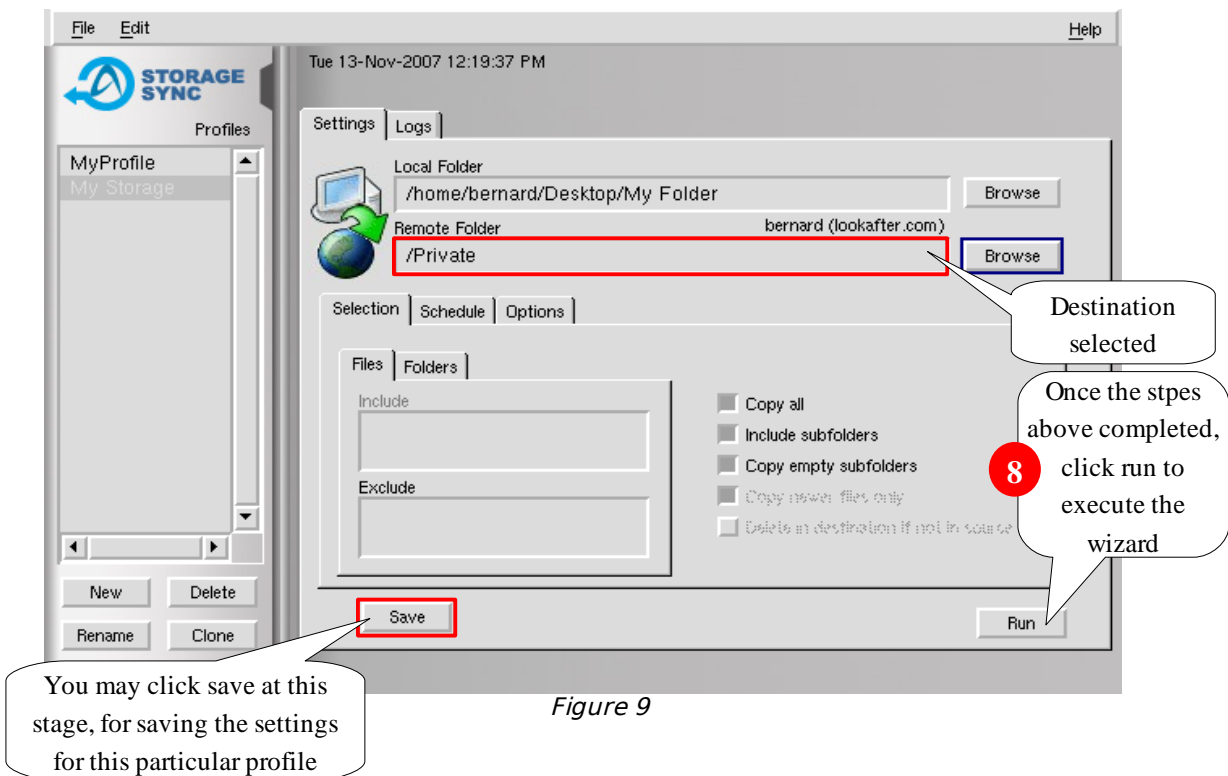


Figure 9

To execute this wizard, click on the **Run** button (figure 9), and a screen similar with below will appear (figure 10a & 10b):

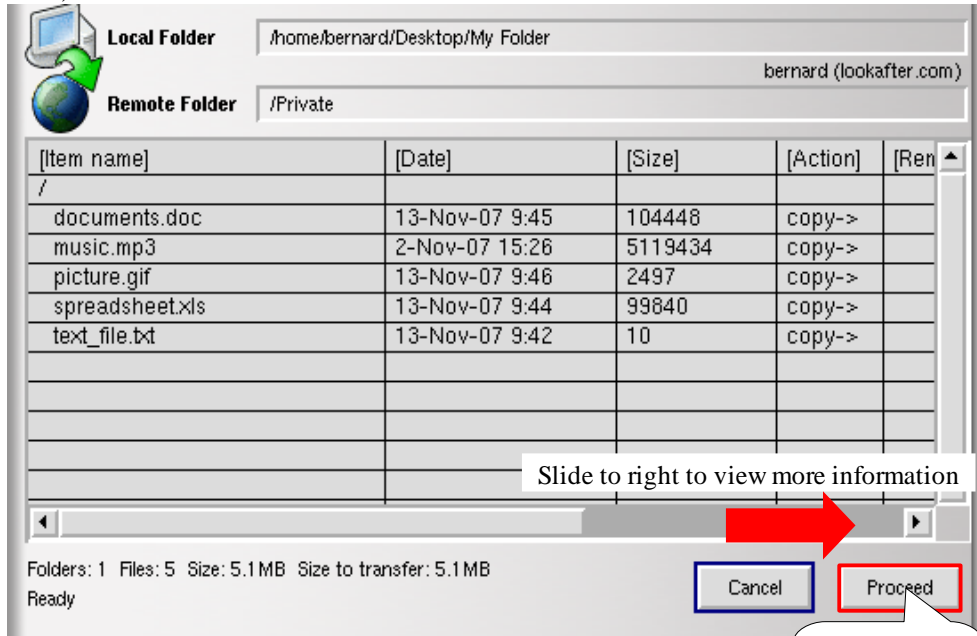


Figure 10a

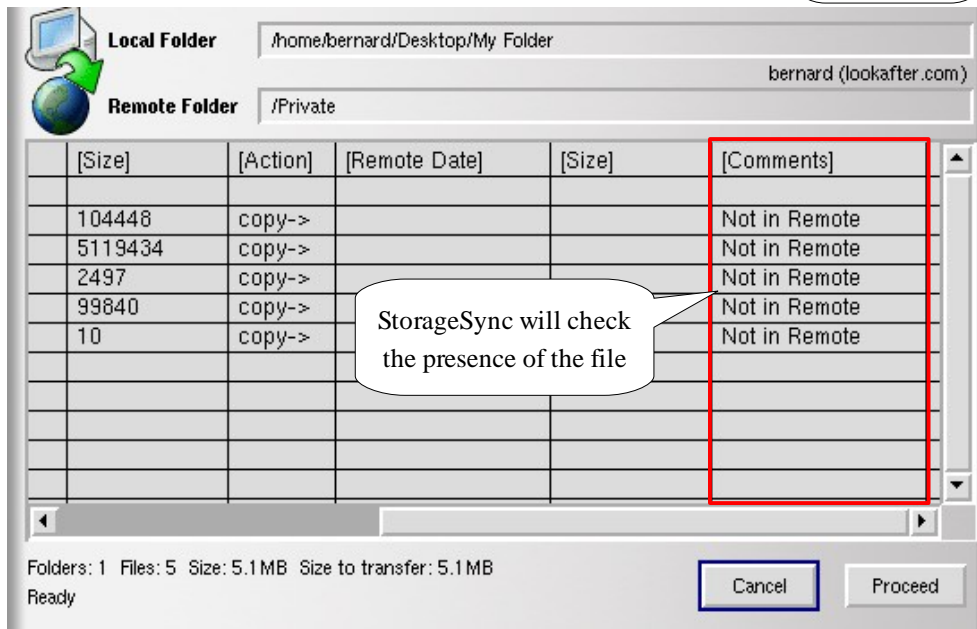


Figure 10b

After you click on **Proceed**, a status screen will pop up and showed you the status of the transmission (figure 11).

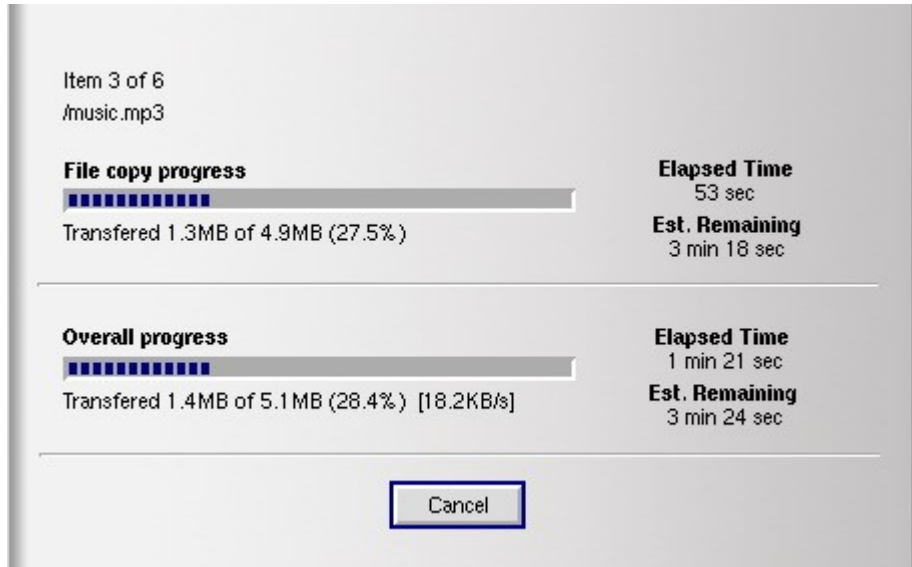


Figure 11

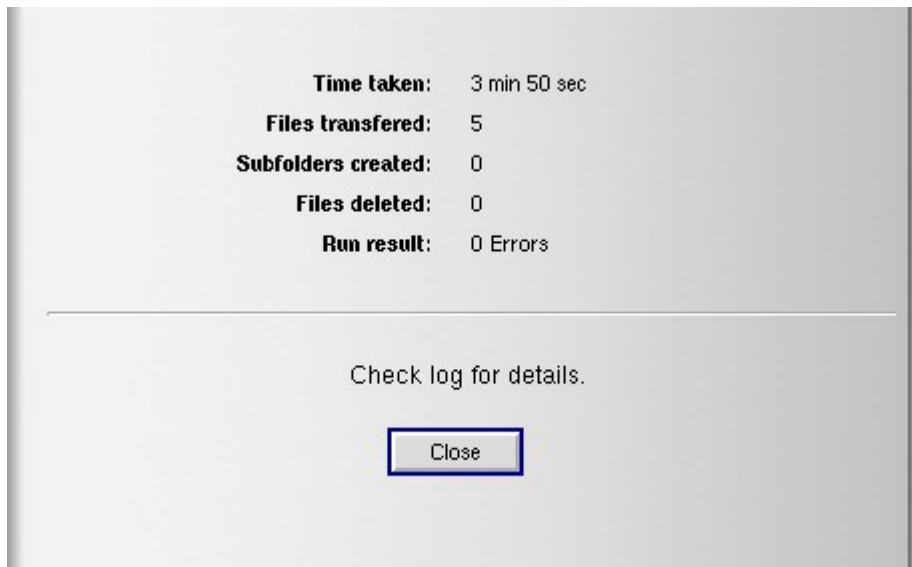


Figure 12

Once the transmission complete, a summary page will be display (figure 12). Click **Close** to exit from this screen.

Right now, you may log on to your Storage Center to check the existence of the the backup file(s).

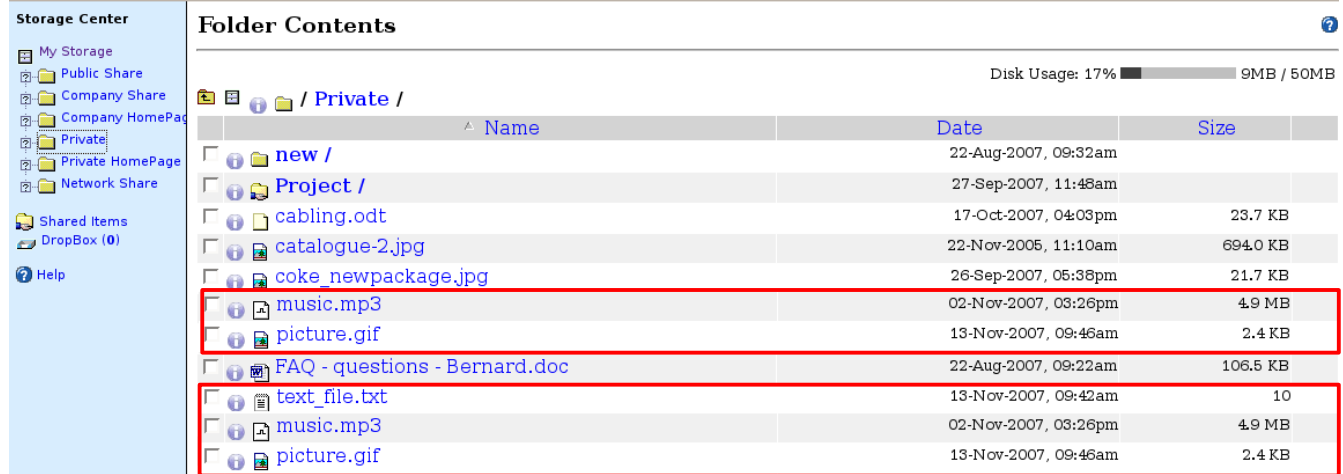


Figure 13

The file(s) has been uploaded/Backup successfully.

Schedule

You can set a schedule for execute the backup wizard which you have defined. Go to the Schedule Tab (figure 14):

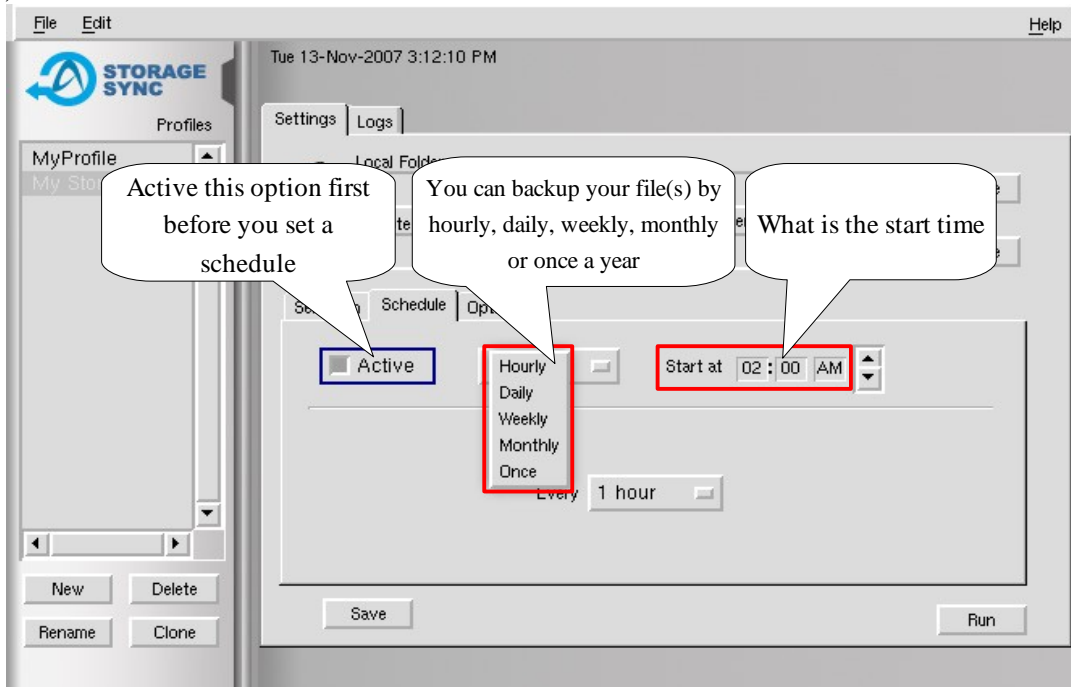


Figure 14

- Hourly** Allowed you backup your file from 5 minutes once up to 1 hour once
- Daily** Allowed you choose a specific time to run this wizard once a day
- Weekly** Allowed you set a day(s) to perform the backup wizard on a specific time
- Monthly** Allowed you to set a day of the month to perform the backup wizard on a specific time
- Once** allowed you to perform the backup wizard on the specific date, specific time once a year

Options

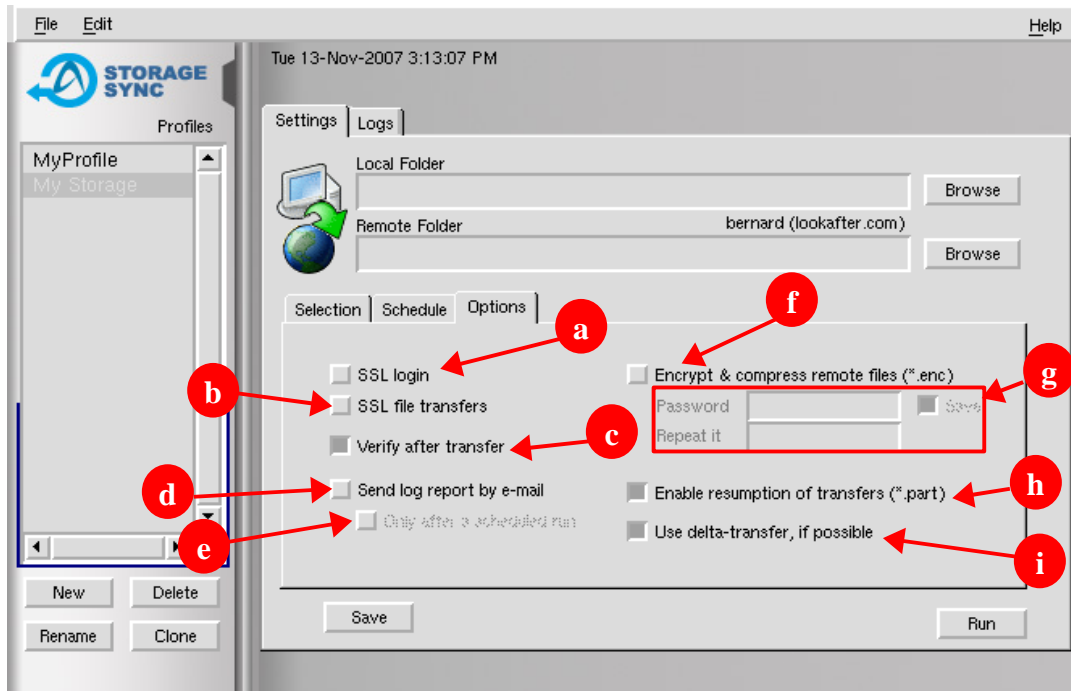


Figure 15

- a) Login through SSL (Secure Socket Layer)
- b) Transfer file through SSL
- c) Verify the file once the transmission done
- d) If this option check, the user will receive a log report through email.
- e) Only after a schedule run if this option check, ONLY schedule task will send out log report
- f) If this option checked, the file will be encrypted during the transmission
- g) Enter the encryption password (the check box allow you to save your password here)
- h) Allows resumption of interrupted downloads/uploads
- i) Delta Transfer uses an algorithm for updating a file on one machine to be identical to a file on another remote machine. The algorithm identifies parts of the source file which are identical to some parts of the destination file, and only sends those parts which cannot be matched in this way.